



## **Referee Information and Guide**

Cincinnati East SAY uses the 2-Referee System for most games. If you find yourself refereeing a game alone, use club linesmen to help with throw-in calls.

### **Referee Training**

#### **Level 1- Passers**

- 4-hour class
- 60-question test -- "every one passes" philosophy --this is a learning tool
- referees serve no more than one year at the Passers Level

#### **Level 2- Wings and above**

- 4-hour comprehensive class; Level 1-Passers class prerequisite
- 100-question test - grade determines referee level -- see Referee Qualifications section for more information
- serve at least one season at Wings level before advancing to Strikers/Kickers based on ability and desire
- informally assessed by field coordinators and experienced referees

#### **Level 3- Advanced**

- 2-3 hour focused subjects
- continue skill development both on and off the field by refereeing Strikers / Kickers levels
- formally assessed by SAY East Referee Assessor

### **Referee Qualifications**

#### **Level 1 Referee: Passers**

- You should successfully complete the Passers Referee training course.
- You will referee for a maximum of one year at this level.

#### **Level 2-A Referee:**

- You should successfully complete the Level 1 and Level 2 Referee training courses and score 70% or better on the Level 2 test.

### **Level 2-B Referee: Area Referee**

- You should successfully complete the Level 1 and Level 2 Referee training courses and score 80% or better on the Level 2 test, and complete the following:
  - Refereed for at least two years.
  - During that time, officiated at least 35 games, with distinction.
  - Received at least two favorable evaluations.

### **Level 2-C Referee: Certified Referee**

- You should successfully complete the Level 1 and Level 2 Referee training courses and score 90% or better on the Level 2 test, with at least 80% in each of the 10 areas.
- You should demonstrate competence in actual refereeing and meet the Area Referee criteria.
- If you do not achieve a score of 90% or better on the Level 2 test, with at least 80% in each of the 10 sections, you may retake the test one month or more after last taking the test.

### **OR**

An active SAY official may qualify as a Certified SAY Referee, if the following criteria are met:

- Has been an active SAY referee for at least two (2) years.
- Has officiated at least 35 games as an SAY Referee (not as an Assistant Referee), with distinction.
- Has received at least two (2) favorable evaluations as a SAY Referee.

### **Level 3-A Advanced Referee: State Referee**

To qualify for State S.A.Y. Referee status, a Referee must:

- Presently be a Certified S.A.Y. Referee in good standing for at least 2 years.
- Achieve and 80% or higher grade on the S.A.Y. Referee test.
- Have officiated at least 35 S.A.Y. matches, which must be as a Referee (i.e. not as a an Assistant Referee) in 11 v. 11 games, at least ten (10) of these games must have been refereed within the past year.
- Attend a three-hour S.A.Y. Intermediate/Advanced Referee Clinic within the last year ... or... an equivalent and approved USSF Intermediate Referee clinic.
- Have received two (2) favorable game evaluations.
- Be nominated and approved by the Area Referee Coordinator.

### **Level 3-B Advanced Referee: National Referee**

To qualify for National S.A.Y. Referee status, a Referee must:

- Have served as a State S.A.Y. Referee for a minimum of two (2) years.

- Have officiated at least 100 S.A.Y. Matches, which must be as a Referee (i.e. not as an Assistant Referee) in 11 v. 11 games. At least ten (10) of these games must have been refereed as a State S.A.Y. Referee during each of any two years.
- Attend a three-hour S.A.Y. Intermediate/Advanced Referee Clinic within the last year ... or... an equivalent and approved USSF Intermediate Referee clinic.
- Have received two (2) favorable game evaluations.
- Be nominated and approved by the Area Referee Coordinator.

### **Other Training Available:**

SAY National and FIFA-related organizations (e.g. Southwest Ohio Soccer Officials Association)

- SAY Soccer National Website - [www.saysoccer.org](http://www.saysoccer.org)
- Southwest Ohio Soccer Officials Association - [www.swosoa.com](http://www.swosoa.com)

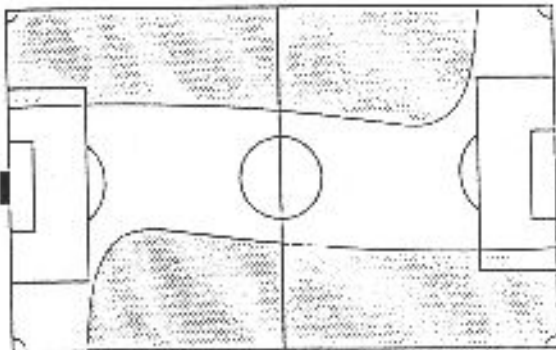
### ***Referee Pregame***

Pregame preparations for the referee are important to being able to call a good game.

#### **Referee Pregame Conference**

Here are some things to do in your pregame conference together.

1. If you've not worked together before, make sure you talk about how much experience each of you has and at what levels.
2. If you have worked together before, ask each other what you might need to do (or not do) to improve on your performance from last time. (This is not to give each other a hard time... this is about working to be better refs.)
3. Go over Lead and Trail expectations. (Each referee is responsible for one end line and one touchline. Lead referee is moving with the play on his or her end of the field, and is generally responsible for goals and offside at that end. Trail referee watches for fouls and throw-ins on the opposite side from the lead referee. Roles switch when play moves to the other end of the field.)



4. Go over mechanics and techniques, especially for goal kicks, corner kicks, direct and indirect kicks near the goal, and substitutions.

5. Decide who will be the primary and backup timekeeper.
6. Discuss the expected performances of the teams and how tightly you will call fouls-- pushing, trips, unfair charges, etc. Checking the Field

Check the field and the nets.

- Make sure the nets are set up properly and anchored well enough on top and on the sides so you'll know when a ball gets into the goal.
- Check the field for holes, debris, and other irregularities. If your game is the first of the day on a field and there is a lot of debris to collect, ask the coaches to have their team or their team parents help.

### **Introductions and Collecting Fees**

Referees must meet coaches and collect fees before each game.

- The referees should go together and introduce themselves to each coach.
- Determine who is the home team (this team should provide the game ball and put out corner cones or flags).
- One referee should accept the fee from the first coach, and the other referee should accept the fee from the second coach. Do not start the game until both fees are collected.

### **Checking in the Players**

In SAY East we usually call both teams to the centerline to check their equipment.

- Referees should welcome the players and introduce themselves to the players.
- Check to see that all players have appropriate shoes (no sharp cleats or toe cleats).
- Check to see that all players have shin guards covered by the socks.
- Check to see that players are not wearing jewelry, watches, hard hair pieces, or hard casts (even padded) of any kind.
- Check to see that players are not chewing gum.
- Remind the players to play for fun and listen to the referees.
- Ask the captains to stay for the coin toss and dismiss the rest of the players.

### **The Coin Toss**

Each team will send out one, two, or sometimes three captains.

- Make sure the captains know which team is the home team and which team is the visitor team.
- Have the visitor team select someone to call the toss.
- Toss the coin, and have the call occur while the coin is in the air. (Most referees let it land on the ground.)
- If the visitor team wins the toss, they get to pick the end of the field they will attack, and the home team will kick off. If the visitor team does not win the toss, the home team picks the end of the field they will attack and the visitor

team will kick off. (Make sure you write this down or remember it so you know who goes where with the next kickoff. Also, write down the direction of the kick off.)

- Send the captains back to tell their coaches and teams the outcome of the toss.
- About 3 minutes before the starting time, whistle the players out to start the game.

### ***Ten Rules to Referee***

#### **BE**

1. **self-confident** ... believe in yourself
2. **in control** ... control oneself first
3. **decisive** ... quickly, without wavering
4. **prepared** ... do 'homework', physical as well as mental
5. **a team player** ... loyalty to one's own (referee) team, understanding roles
6. **honest** ... integrity, character
7. **committed** ... trying to reach your goals
8. **fair** ... a sense of justice, impartial, tolerant
9. **courageous** ... not afraid to whistle a decision, even if unpopular
10. **human** ... show understanding, a 'people-person'